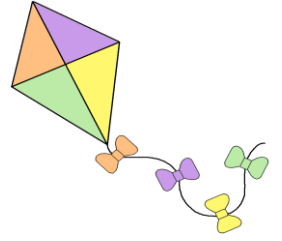
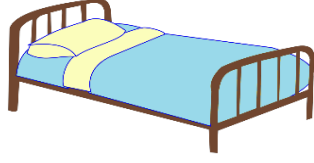
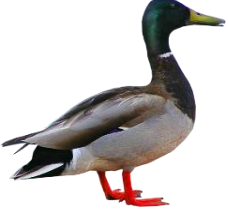


İçinde Ö-ö sesi bulunan resimlerin altındaki kutuları boyayınız.

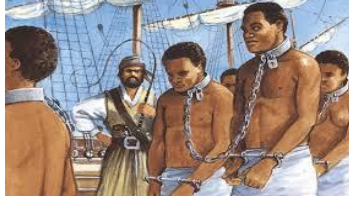


Bařta - Ortada - Sonda

İçinde "Ö-ö"sesi bulunan kelimeleri inceleyerek boyayınız.



ördek



köle



döner



öttü



köylü



öküz



tören



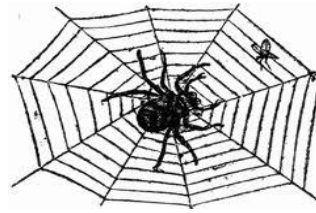
önlük



örgü



börek



örümcek



dört



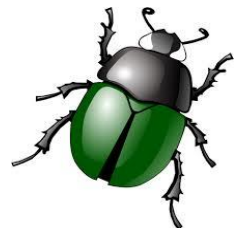
gözlük



ödev

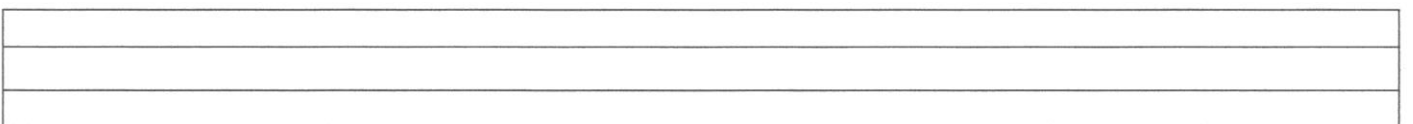
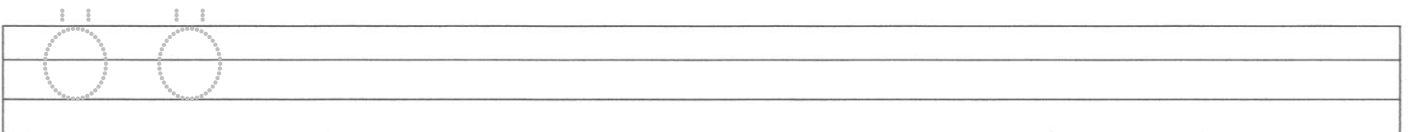
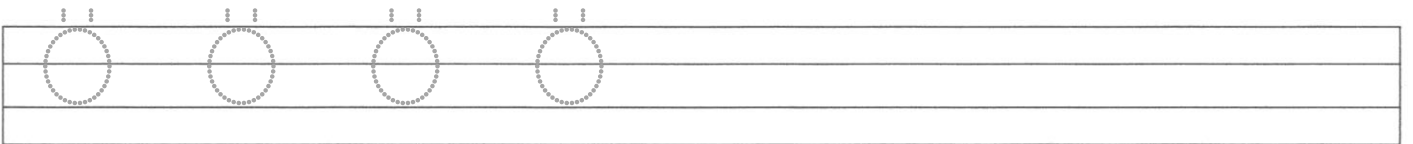
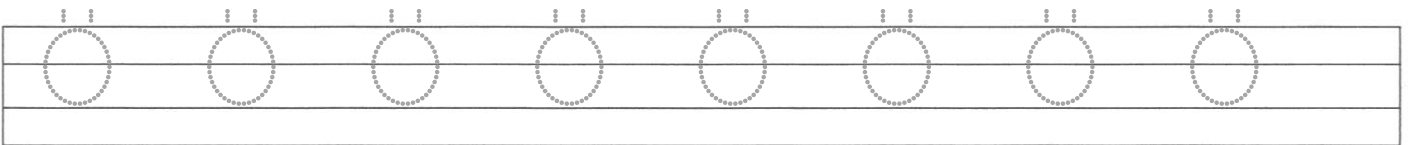
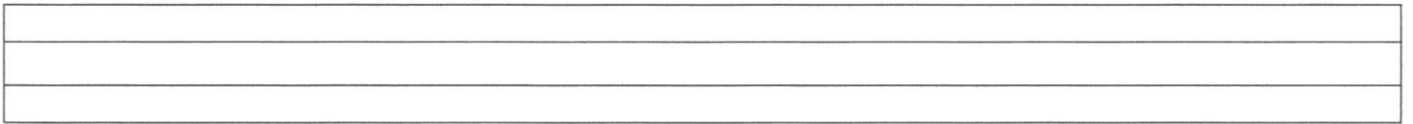
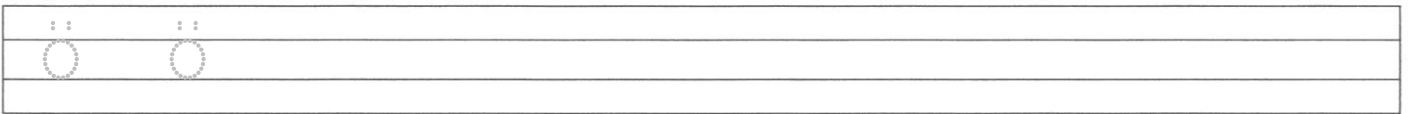
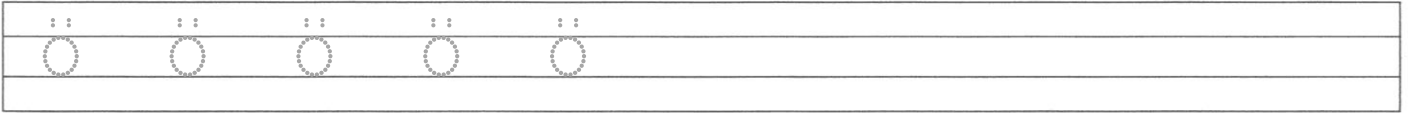
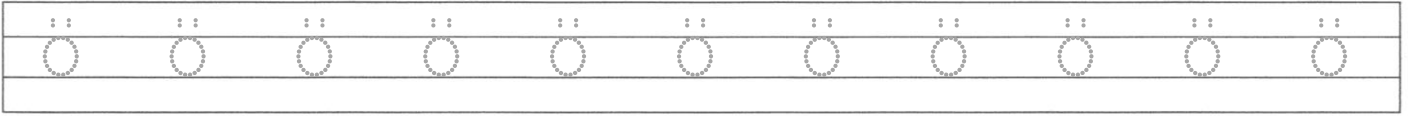


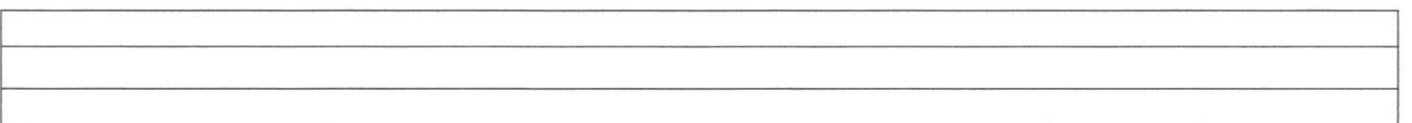
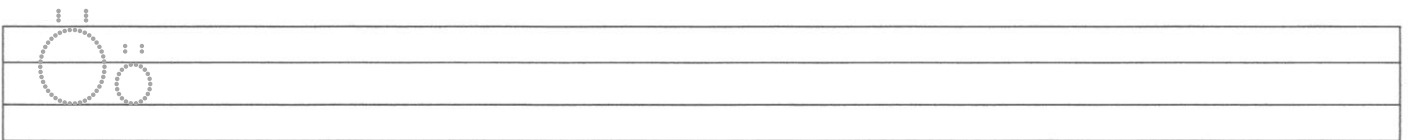
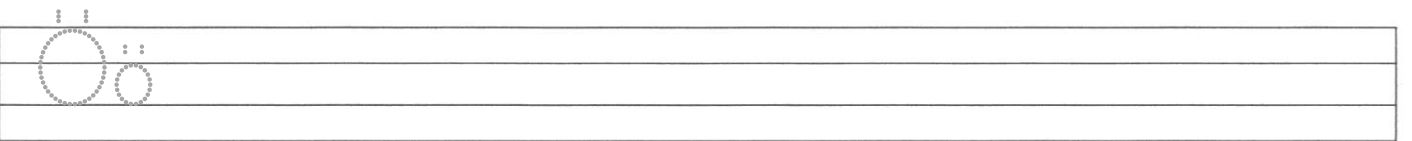
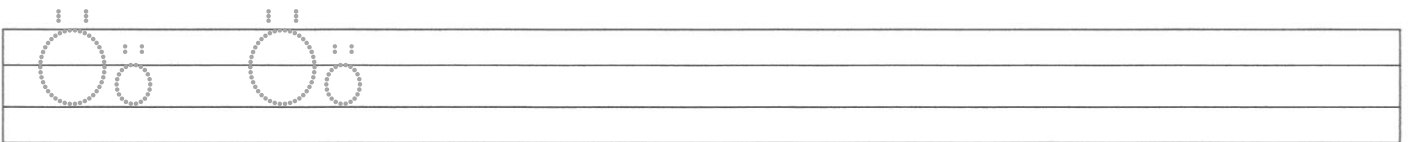
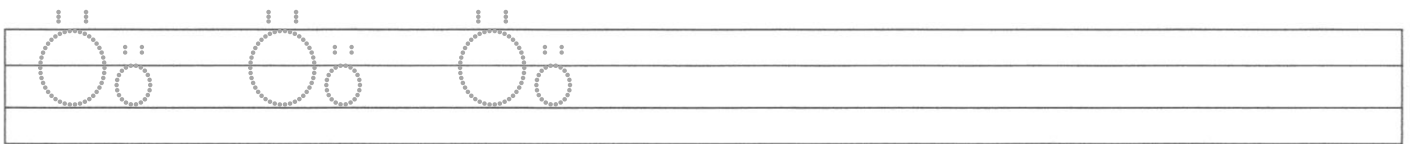
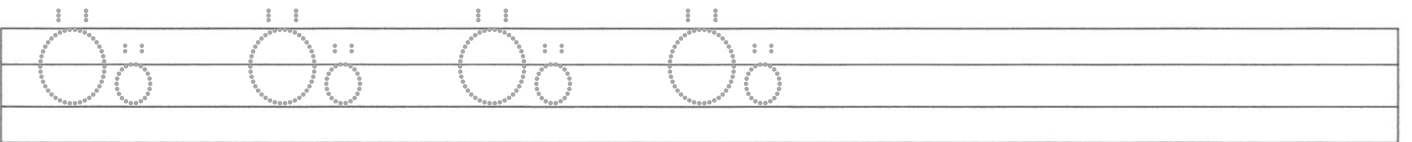
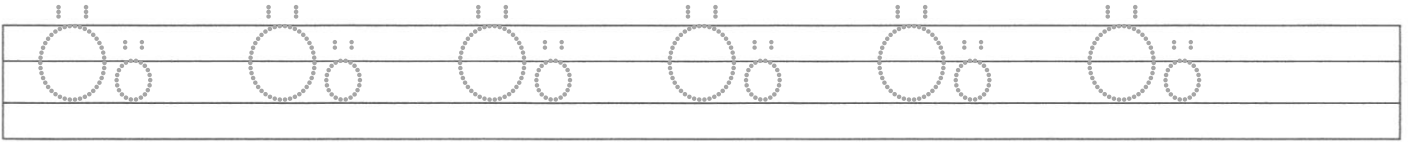
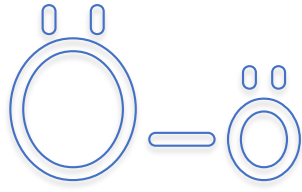
göz



böcek







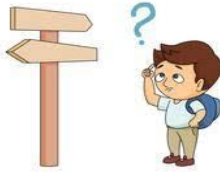
kö	k
kök	



kö	y
köy	



yö	n
yön	



kö	le
köle	



Ö	nal
Önal	



kö	tek
kötek	



köy	lü
köylü	



ön	lük
önlük	



Hece Tablosu

	a	e	i	o	ö	u	ü
k	ak	ek	ik	ok	ök	uk	ük
l	al	el	il	ol	öl	ul	ül
m	am	em	im	om	öm	um	üm
n	an	en	in	on	ön	un	ün
t	at	et	it	ot	öt	ut	üt
y	ay	ey	iy	oy	öy	uy	üy

	a	e	i	o	ö	u	ü
k	ka	ke	ki	ko	kö	ku	kü
l	la	le	li	lo	lö	lu	lü
m	ma	me	mi	mo	mö	mu	mü
n	na	ne	ni	no	nö	nu	nü
t	ta	te	ti	to	tö	tu	tü
y	ya	ye	yi	yo	yö	yu	yü

Kelime Oluşturma

kö	k
kök	

kö	y
köy	

ö	ne
öne	

ö	te
öte	

yö	n
yön	

kö	ke
köke	

kö	kü
kökü	

kö	le
köle	

kö	tü
kötü	

kö	ye
köye	

kö	yü
köyü	

Ö	nal
Önal	

Ö	nel
Önel	

ö	nem
önem	

ön	le
önle	

ö	ten
öten	

öt	me
ötme	

öt	tü
öttü	

öy	kü
öykü	

öy	le
öyle	

kök	lü
köklü	

kö	tek
kötek	

köy	lü
köylü	

ön	lük
önlük	

yö	nel
yönel	

kö	le	lik
kölelik		

ö	nem	li
önemli		

ön	lük	lü
önlüklü		

İki resim arasındaki dört farkı bulunuz.



Aşağıdaki metinleri bol bol oku

Ö ö ö öttü.

Ala keklik öttü.

Öyle kötü ötme leylek.

İyi iyi öt leylek.

Öykü kötü elma alma.

Öykü yeni önlük al.

Öykü köye kütük ilet.

Yekta kötü kötü okuma iyi oku.

Önal keklik öttü.

Önal, keklik öttü mü?

Kötü mü öttü?

İyi mi öttü?