

ZAMAN ÖLÇME

Öğleden Önce / Öğleden Sonra



Öğleden sonraki saatlerde, akrebin gösterdiği sayının üzerine 12 eklenerek okunur.

Yanda ki saat;



Öğleden önce : → 02.00

+ 12.00



Öğleden sonra: → 14.00

1. Aşağıdaki saatlerin öğleden önce ve öğleden sonra kaç gösterdiklerini örnekteki gibi yazalım.

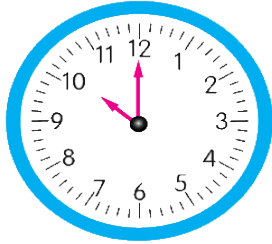


04.00

+ 12.00



16.00

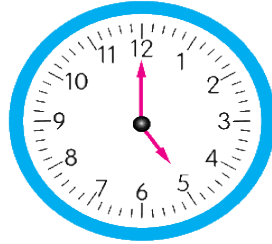


.

+ 12.00



.

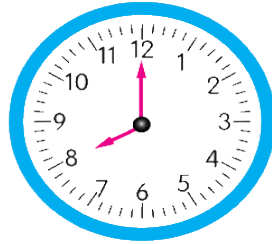


.

+ 12.00



.

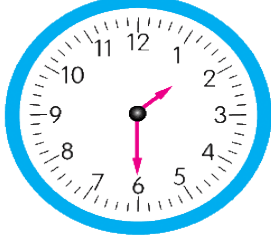


.

+ 12.00



.

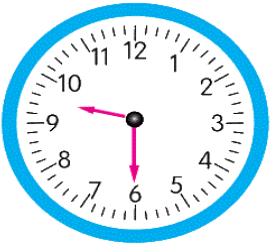


.

+ 12.00



.



.

+ 12.00



.

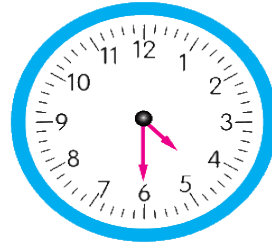


.

+ 12.00



.

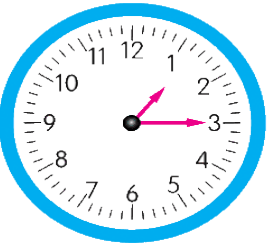


.

+ 12.00



.



.

+ 12.00



.

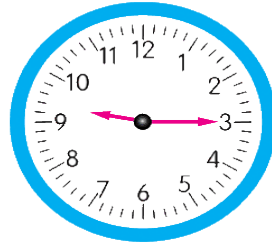


.

+ 12.00



.

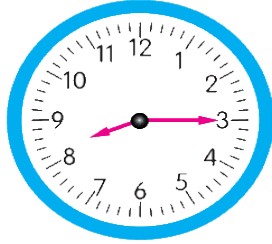


.

+ 12.00



.



.

+ 12.00

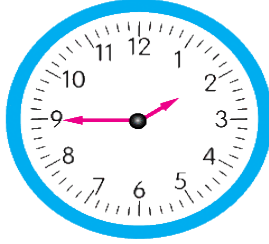


.

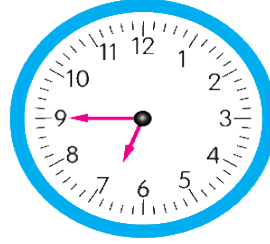
ZAMAN ÖLÇME



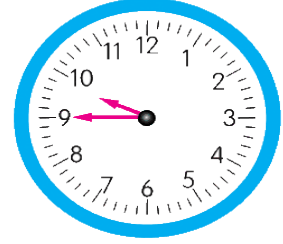
+



+



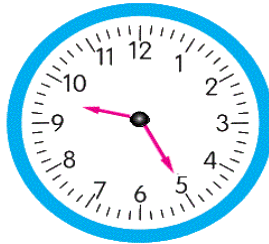
+



+



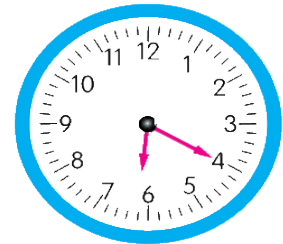
+



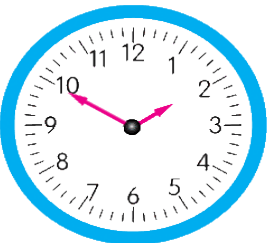
+



+



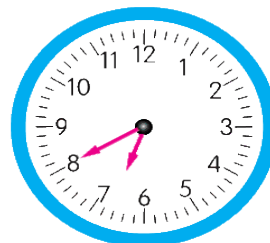
+



+



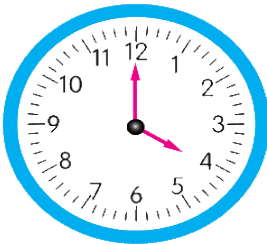
+



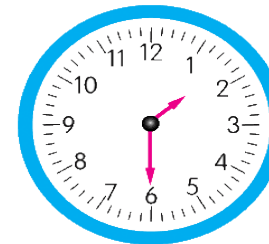
+



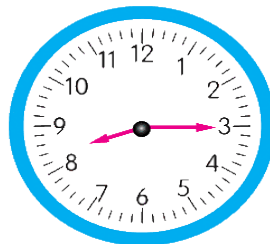
+



+



+



+



+

