

“O-o sesi” CÜMLE OKUMA KAĞIDI

Nail laleli konak al.

Okan iki nane al.

Okan ile Nil kol kola.

Ali ona naneli kek al.

Okan on kilo nane al.

Naile nane kokla.

Kaan 6 koli kek al.

Ela eline konan ne?

Ali ninene lale al.

Kenan ilkeli ol.

On kilo kelek al.

Nil on koli kola al.

Ali ile Okan kanka.

Lale Nil ile konakla.

Nil on iki kola al.

Okan ona iki ok al.

İnal nane ile ok elle.

Naile o konak ninenin.

Nail koli koli elek al.

Kenan eline nane al.

Laleli konak Nail'in.

Annene on iki lale al.

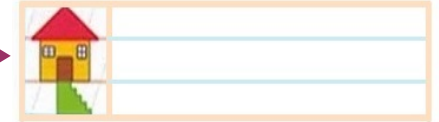
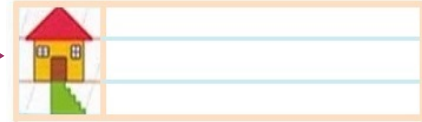
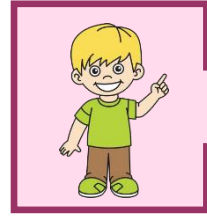
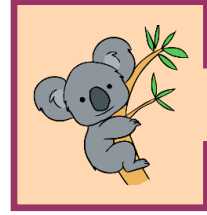
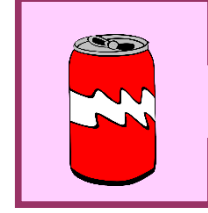
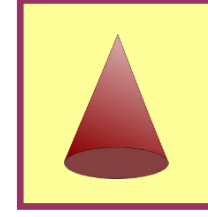
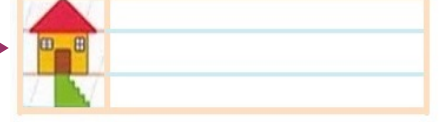
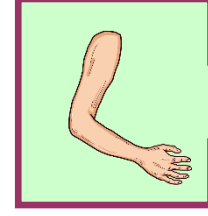
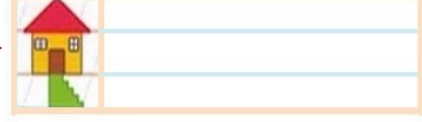
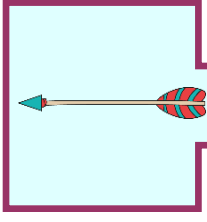
Kel Ali ile kola al.

Kaan o keki kokla.

Okan kılone ne?

Nine eline ok al.

○ Sesi Görsel Dikte





Nail laleli konak al.



Okan ile Nil kol kola.



Okan on kilo nane al.



Kaan 6 koli kek al.



Nail koli koli kola al.



On kilo kelek al.



Ali ile Okan kanka.



İnal nane ile ok elle.



Ali ninene lale al.





Laleli konak Nail'in.



Ali ona naneli kek al.



Naile nane kokla.



Ela eline konan ne?



Lale Nil ile konakla.



Okan ona iki ok al.



Naile o konak ninenin.



Annene on iki lale al.



Kaan o keki kokla.

