

ETKİNLİK VE TESTLER

1.

Resimlerdeki gruplardan hangisinde hayvanların sayısı diğerlerine göre daha azdır?

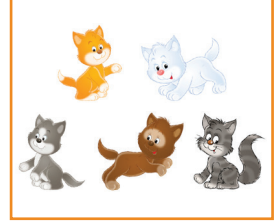
A)



B)



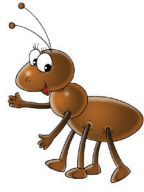
C)



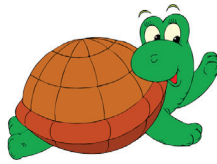
2.

Aşağıdaki canlılardan hangisinin ayak sayısı daha çoktur?

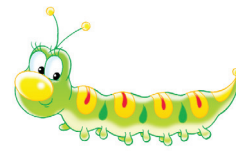
A)



B)



C)



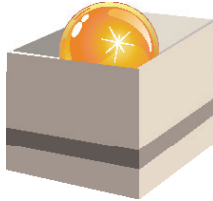
3.

Aşağıdakilerden hangisinin içinde 1 adet nesne vardır?

A)



B)



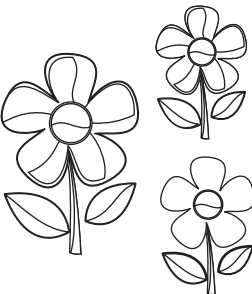
C)



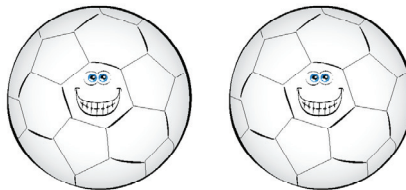
4.

2 tane nesne olan resmi bulup boyar mısın?

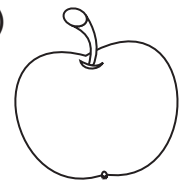
A)



B)



C)



5.

Hangi resimde top oynayan çocukların sayısı 3 tanedir?

A)



B)



C)



6.

Sayıları birbirine eşit olan grup hangisidir?

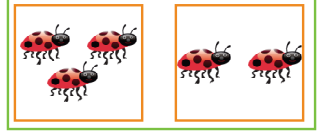
A)



B)



C)



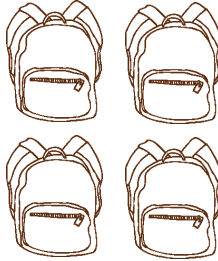
7.

Hangi eşyadan 4 tane var? Bulup boyayınız.

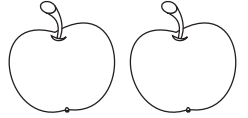
A)



B)



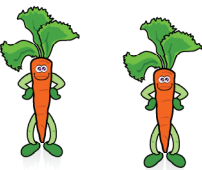
C)



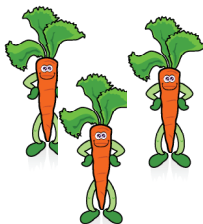
8.

Tabaktaki havuçların sayısının 4 tane olabilmesi için kaç havuç daha eklememiz gerekir?

A)



B)



C)

