

2022-2023 EDUCATIONAL YEAR SECONDARY SCHOOL
ENGLISH LESSON 2nd TERM 2ND EXAM for 6th (A) GRADES

Name-Surname:

Class:.....

Number:.....

A) Match the occupations with the workplaces.

- | | |
|-------------------|-------------------|
| 1. Scientist | a. Company |
| 2. Soldier | b. Lab |
| 3. Waitress | c. Police station |
| 4. Teacher | d. Hospital |
| 5. Worker | e. Spaceship |
| 6. Manager | f. Plane |
| 7. Doctor | g. Factory |
| 8. Policeman | h. School |
| 9. Astronaut | i. Restaurant |
| 10. Pilot | j. Army |

B) Choose and circle the right option below.

1. He is a waiter. He **serves** / **cooks** foods.
2. Fatmagül is a nurse; she Works at a **hospital** / **lab**.
3. Cengizhan is an architect; he **designs** / **repairs** buildings.
4. Fatmanur is an author; she always **writes** / **reads** boks.
5. He is a doctor and he writes **story** / **prescription**.
6. Halise Nur is a lawyer; she defends **people** / **animals**.
7. My friend Ömer is a teacher. He Works at a **clinic** / **school**.
8. Şaban is a pilot and he can **drive** / **fly** planes.
9. M. Ali is a hairdresser. He cut and **designs** / **paint** hair.
10. Sude Nur is a tailor and she can **sew** / **clean** fabrics and clothes

B) Write the years in sentences.

- | | |
|---------------|----------------|
| 1. 2006 | 6. 2016 |
| 2. 2017 | 7. 1917 |
| 3. 1963 | 8. 1755 |
| 4. 1884 | 9. 1923 |
| 5. 2010 | 10. 2019 |

C) Circle the incorrect word for each phrase. (*Yanlış olan seçeneği yuvarlak içerisine alınız.*)

Pick → Flowers
→ Apples
→ Museums

Go → on holiday
→ playing golf
→ ice-skating

Visit → Films
→ Relatives
→ Parents

Stay → at a hotel
→ at a resort
→ in a tree

Swim → in the sea
→ water
→ in the pool

Drive → plane
→ school bus
→ truck

Play → Snowball
→ Rafting
→ Handball

Do → forest
→ karate
→ yoga

Try → skiing
→ scuba-diving
→ seaside

D) Choose the correct answers.

1. I had a great time with my friends on holiday last month.

- A) It wasn't very good. B) It was great. C) It was boring. D) It was horrible.

2. A:

B: It was really **bad**. We stayed at an **UN**-comfortable hotel and the foods were very bad.

- A) **Who** was with you? B) **Where** were you? C) **Where** was the hotel? D) **How** was your holiday?

3. A: **Where** did you learn skiing?

B: I was on holiday last winter and I took skiing lessons there.

- A) It is my sister. B) With my cousins. C) In Uludağ. D) No, I didn't.

4. Look at the pictures. Which one is **false**?



DONNA



LAURA



CAROL



SARAH

- A) Carol went sightseeing two years ago. C) Laura went to the mall to do some shopping.
B) Donna learned snowboarding and she is good at it. D) Sarah went swimming on her last summer holiday.

E) Write the 1st forms of the verbs in the text above.

- | | | |
|-------------------|-------------------|--------------------|
| 1. – came | 6. – went | 11. – swam |
| 2. – watched | 7. – bought | 12. – played |
| 3. – stayed | 8. – visited | 13. – ate |
| 4. – had | 9. – made | 14. – learned |
| 5. – saw | 10. – did | 15. – drove |

F) Circle the correct word. (Doğru olanı yuvarlak içine alınız.)

1. I usually take the public bus to work because I want to **save / protect** air pollution.

2. You should **plug / recycle** plastic bags and newspapers.

3. We shouldn't **harm / use** animals in our planet.

4. You shouldn't throw **rubbish / energy** out on to the grass.

5. We should **pollute / protect** the environment.

6. You shouldn't use deodorants much. They **save / damage** the ozone layer.

7. You shouldn't **cut down / plant** trees in the forests.

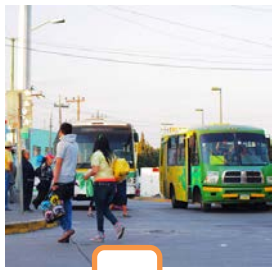
8. You **should / shouldn't** use eco-friendly bags.



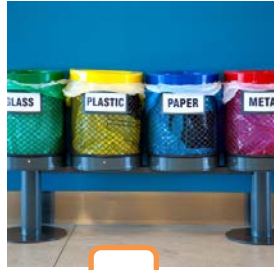
G) Look at the pictures and match them with the slogans below.



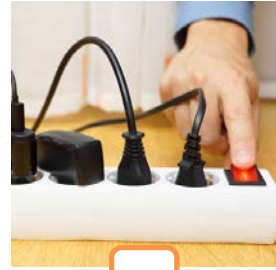
1



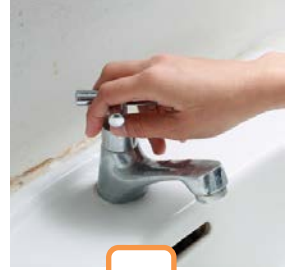
2



3



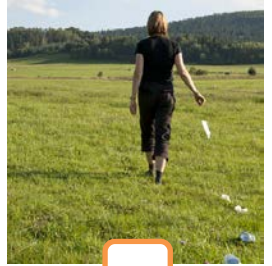
4



5



6



7



8



9



10

..... Use public transportation.

..... Reduce noise pollution.

..... Save our forests; don't cut down trees.

..... Keep the environment clean.

..... Don't use deodorants ; stop damaging the ozone layer.

..... Recycle paper, plastic, metal and glass.

..... Turn off the taps; don't waste water.

..... Turn off the electrical devices.

..... Protect the environment; don't throw rubbish around.

..... Don't pollute the air; stop air pollution.



H) Choose the correct answer.

1. Factories should use filters to

- A) pollute the air B) keep it clean
C) recycle more glass D) reduce air pollution

2. Don't waste water.

- A) Use your bicycle while going to school
B) Turn off the tap while brushing your teeth
C) Go bird watching and take photos of the birds
D) Unplug the TV when you don't watch it

3. Which sentence is incorrect about protecting nature?

- A) We should plant more trees to get more oxygen.
B) We should buy recyclable products.
C) We shouldn't turn off the lights when we leave the room.
D) We shouldn't waste electricity and water.



4. A: What are you doing?

B:

A: I see, but you should **turn off the tap** when you don't use it. Don't waste water.

B: Oh, I am sorry. I am turning it off now.



- A) I am brushing my teeth B) I am walking on the grass
C) I am unplugging the TV D) I am playing video games

i) Match the words with the pictures.

MAGAZINE

NEWSPAPER

DICTIONARY

E-BOOK

LIBRARY

ENCYCLOPEDIA

BOOKSHELF

NOVEL



J) Choose the correct answer for the dialogs below.

1. A: ?

B: There were fifty magazines.

a) Where did you see the magazines?

b) How many magazines were there on the shelf?



3. A: ?

B: I read the newspaper and drink tea.

a) What do you do after you get up?

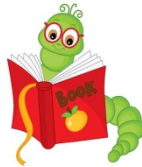
b) What did you watch on TV?

2. A: ?

B: Melis and Danial.

a) Who were at the reading club?

b) Where were you yesterday?



4. A: ?

B: Yes, I was. I had a great time.

a) How was your holiday last summer?

b) Were you at school on Thursday?

5. A: ?

B: It is behind the sofa on the desk.

a) What time do you read a book?

b) Where is my new book?

PUAN TABLOSU

A BÖLÜMÜ: 20 P

D BÖLÜMÜ: 8 P

G BÖLÜMÜ: 8 P

B BÖLÜMÜ: 10 P

E BÖLÜMÜ: 15 P

H BÖLÜMÜ: 8 P

C BÖLÜMÜ: 9 P

F BÖLÜMÜ: 8 P

İ BÖLÜMÜ: 10 P

J BÖLÜMÜ: 20 P



ENGLISH TEACHER